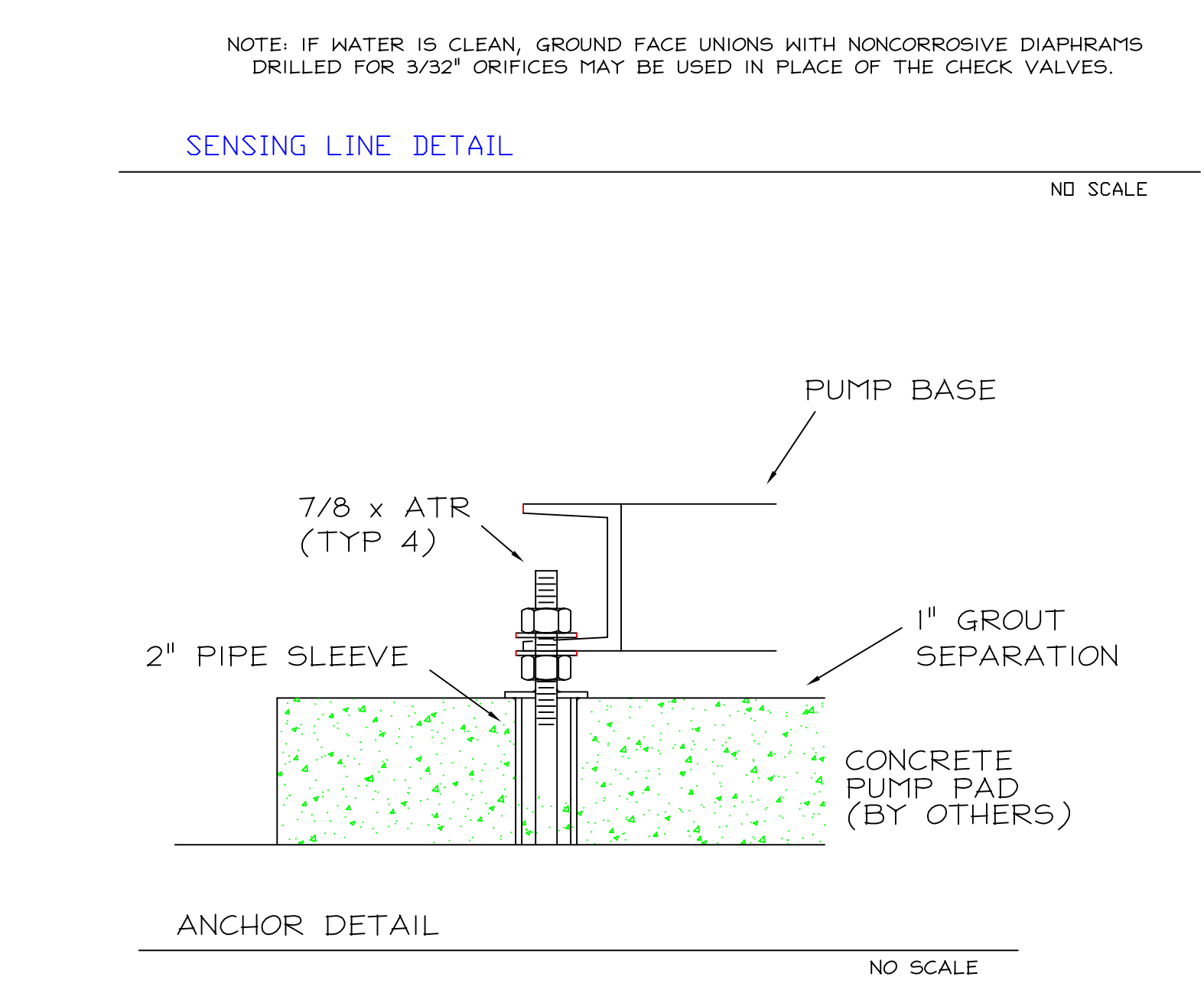
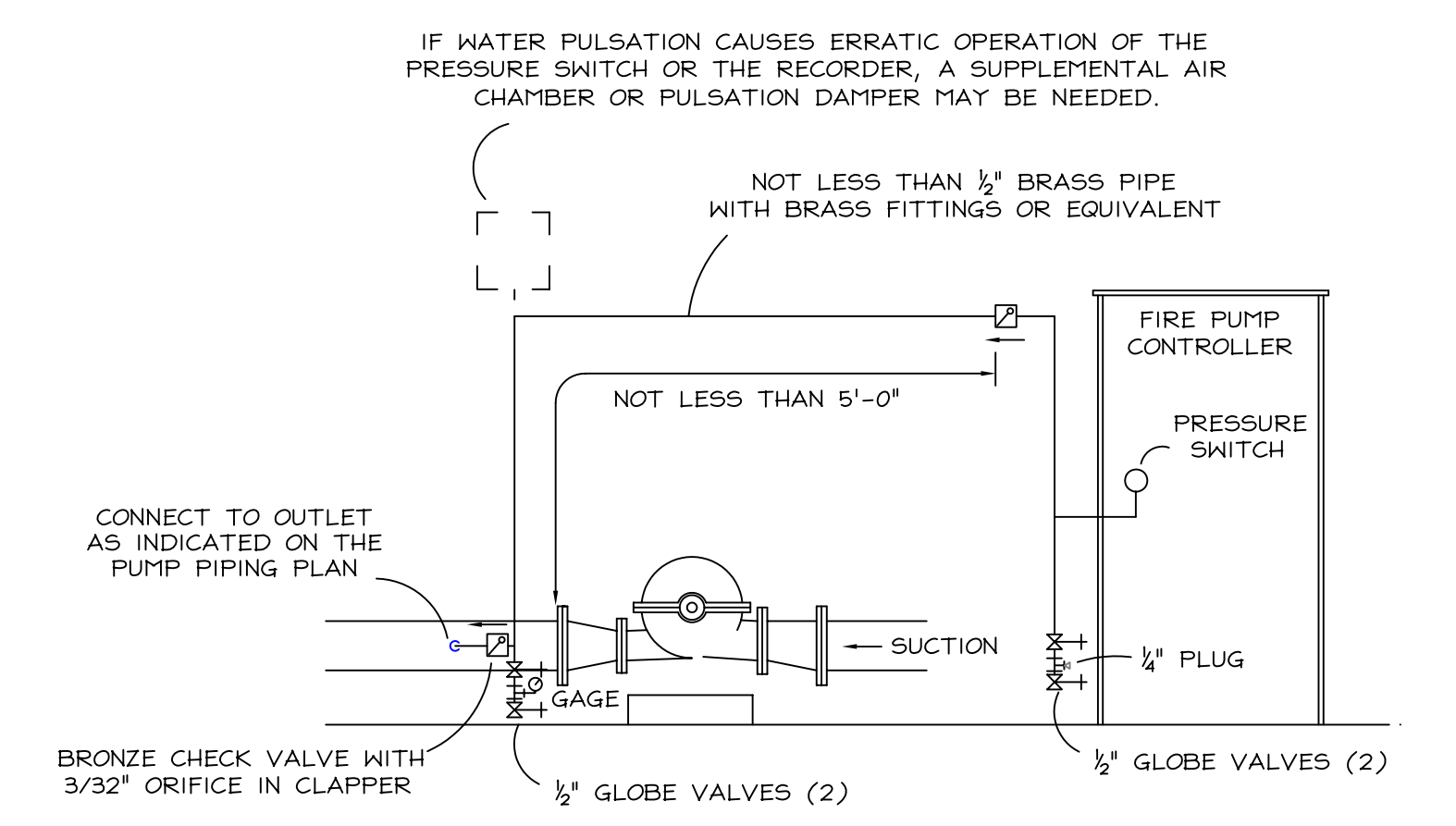
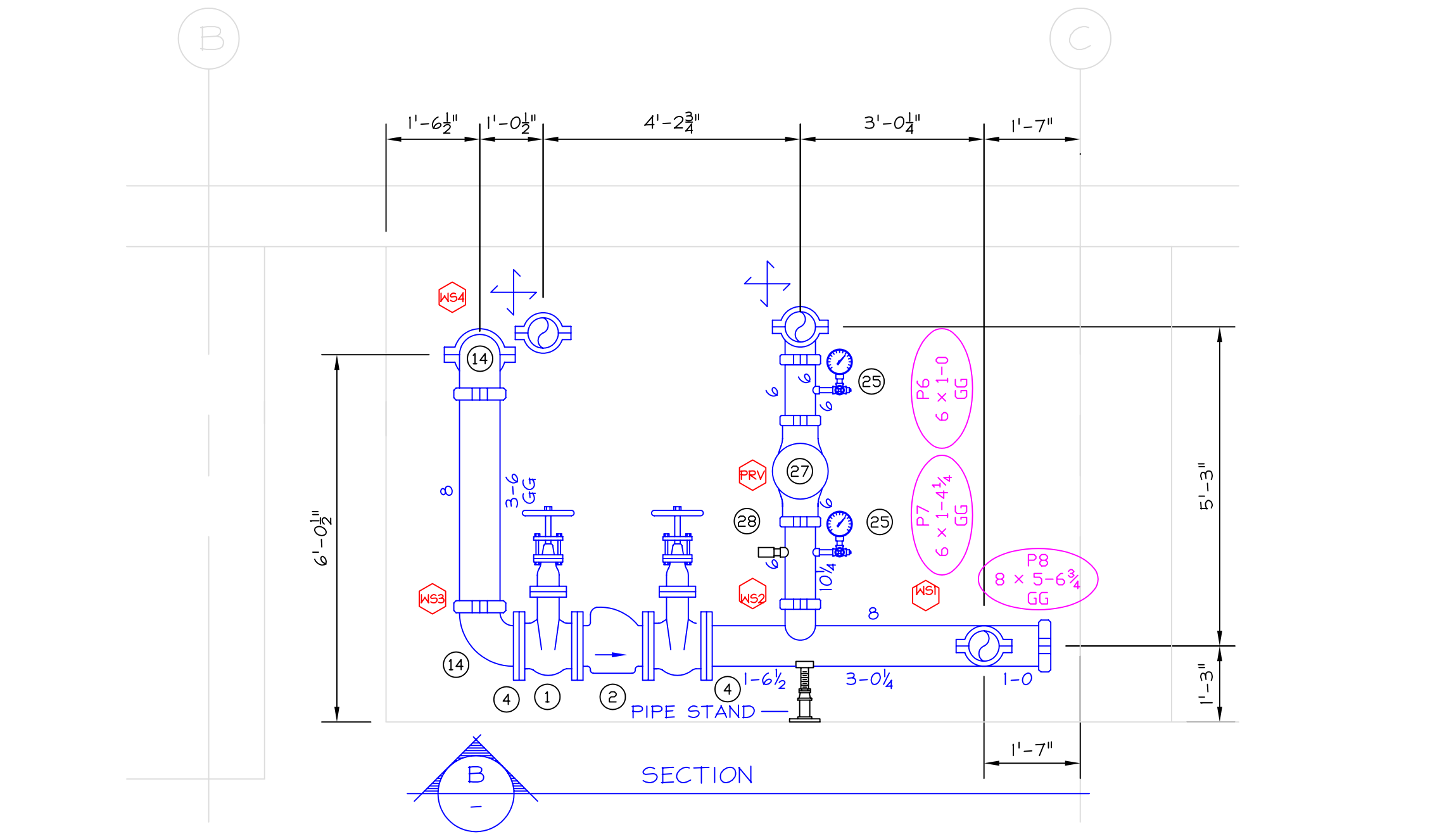
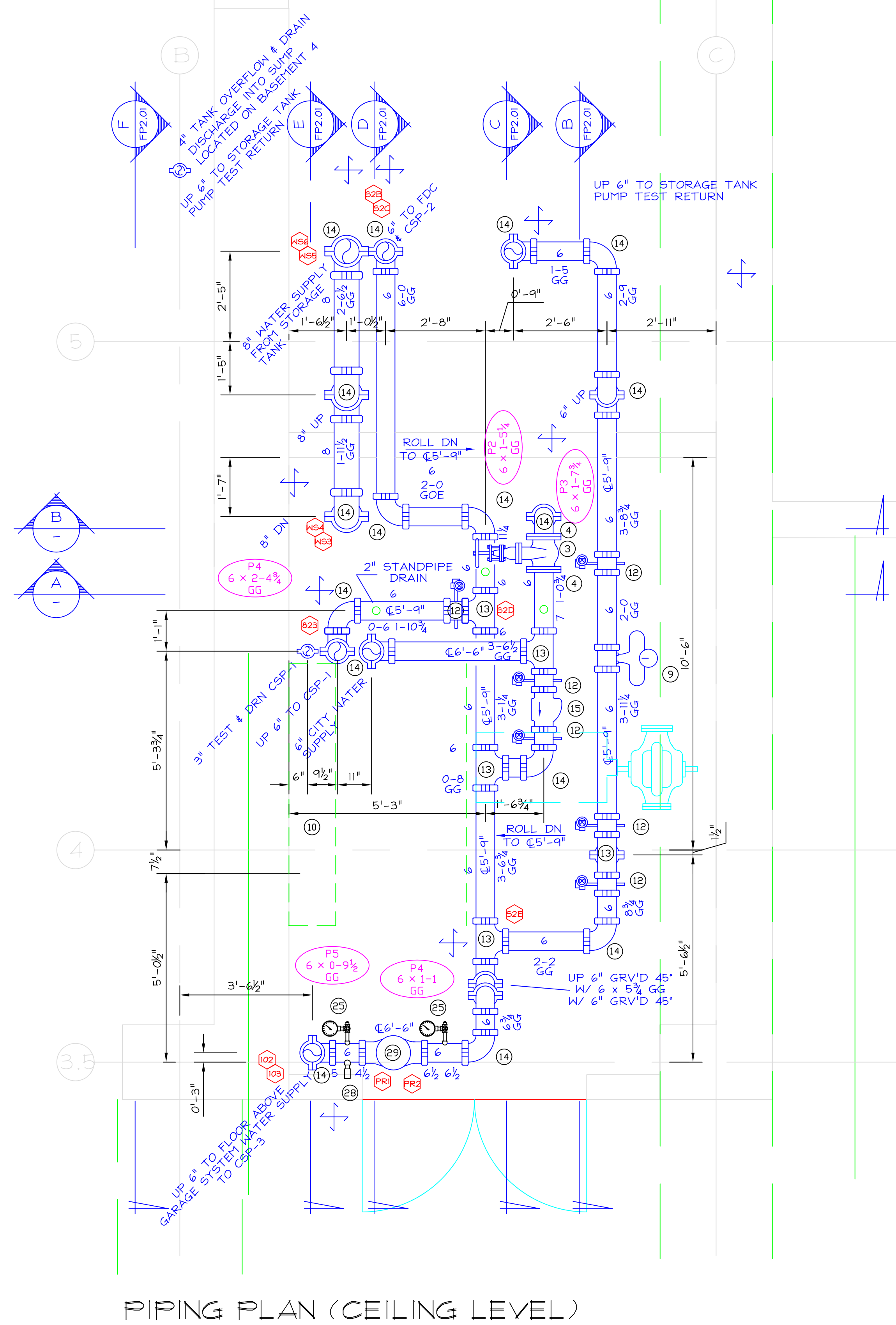
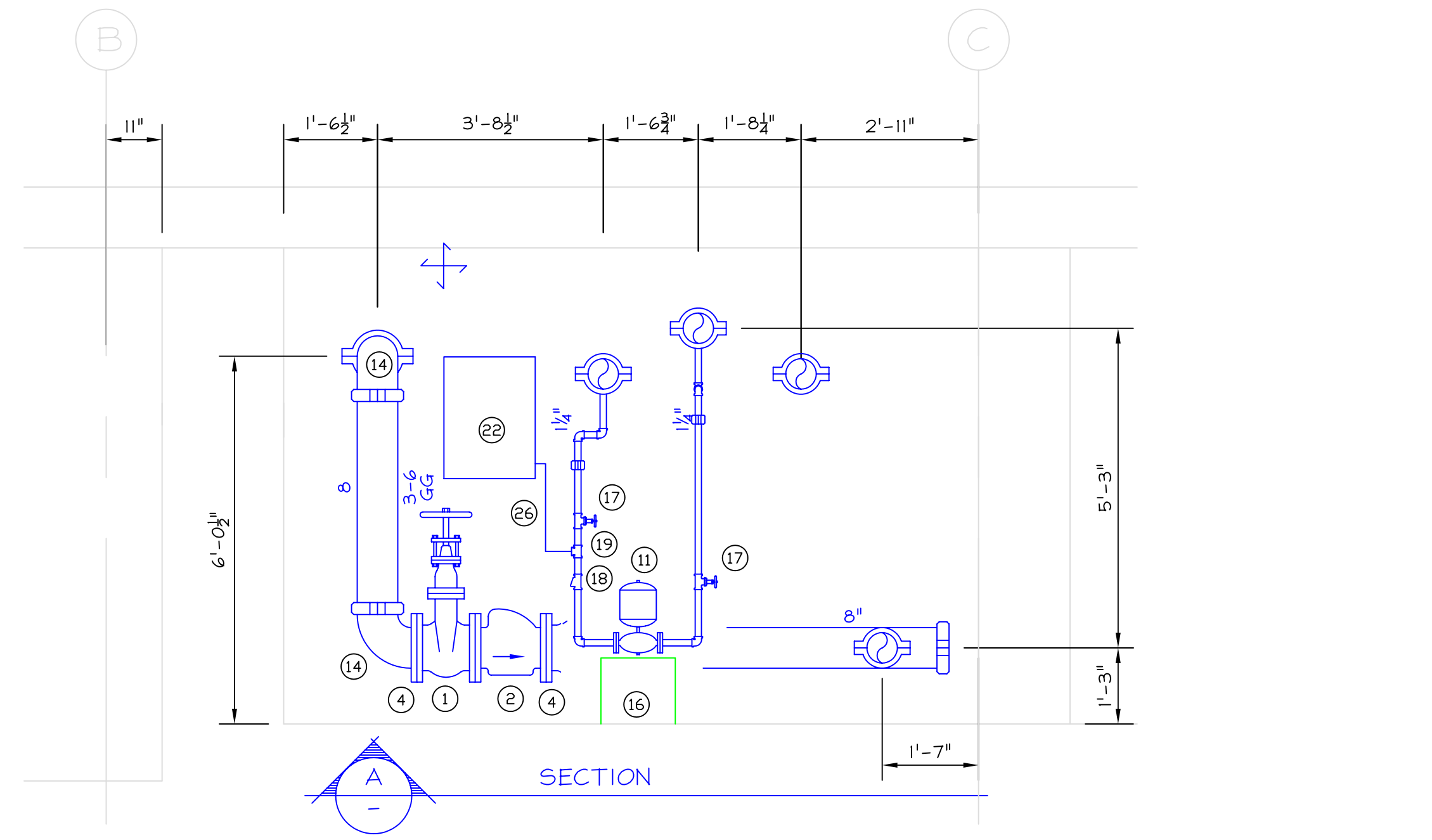
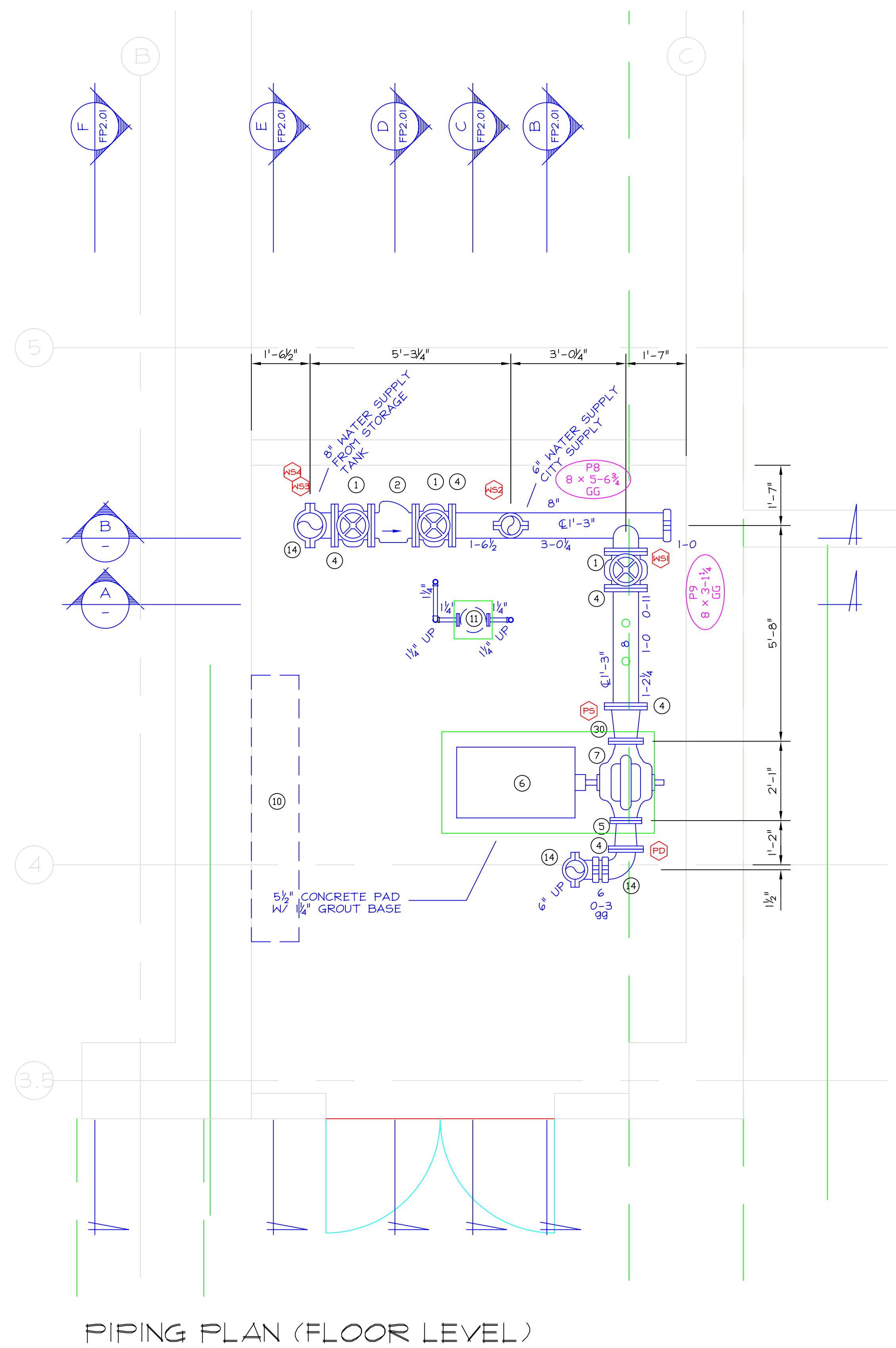


REVISIONS	BY

ENGINEERED FIRE SYSTEMS, INC.
 AUTOMATIC SPRINKLER "SPECIALISTS"
 13457 COLEMAN HWY. GRASS VALLEY, CA 95945, (530) 274-9400

FIRE PUMP

DRAWN
H. MORGADO
DATE
05-03-05
SCALE
1/2" = 1'-0"
FILE NUMBER
10112
SHEET
FP2.0
1 OF 2 SHEETS



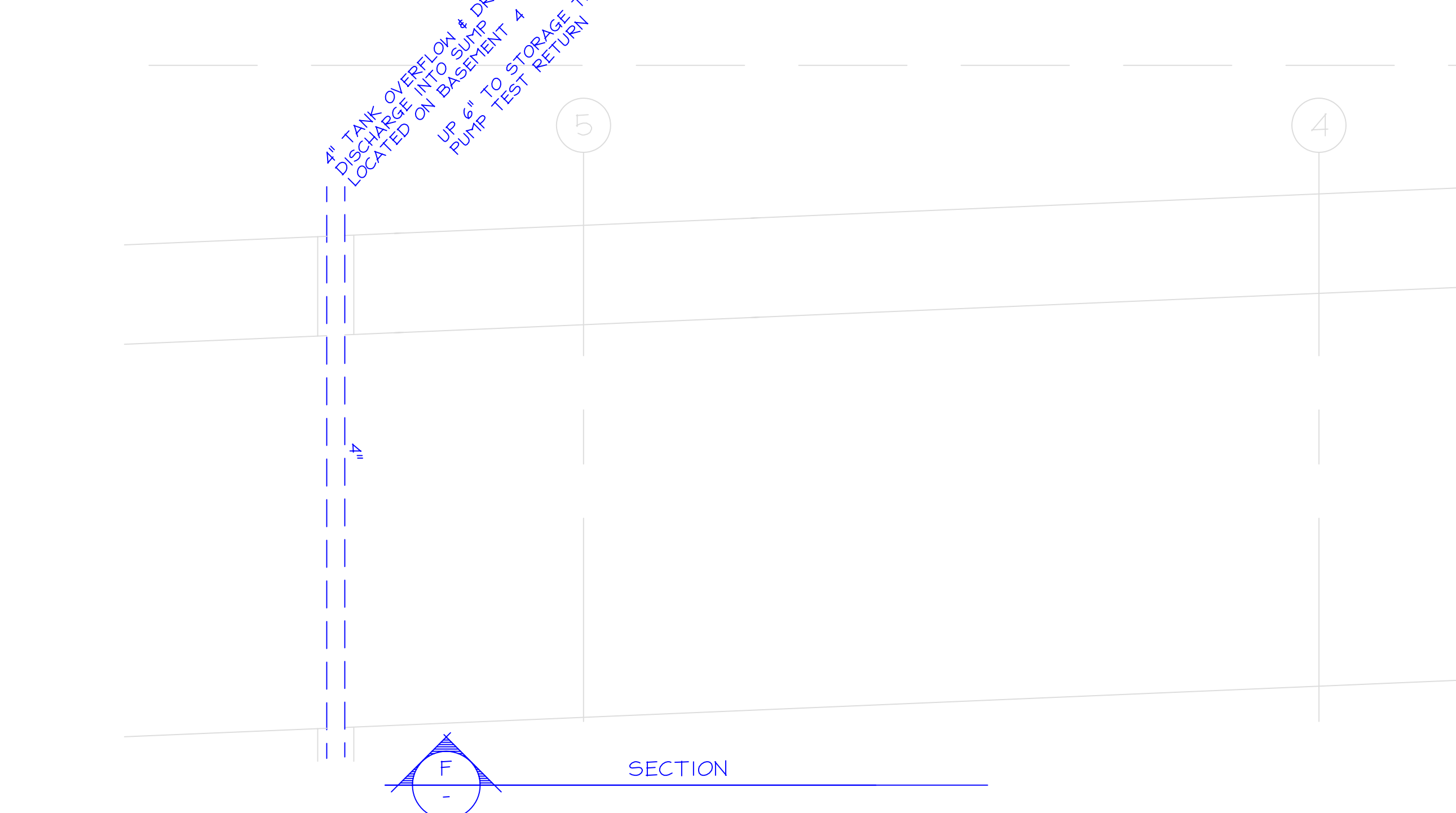
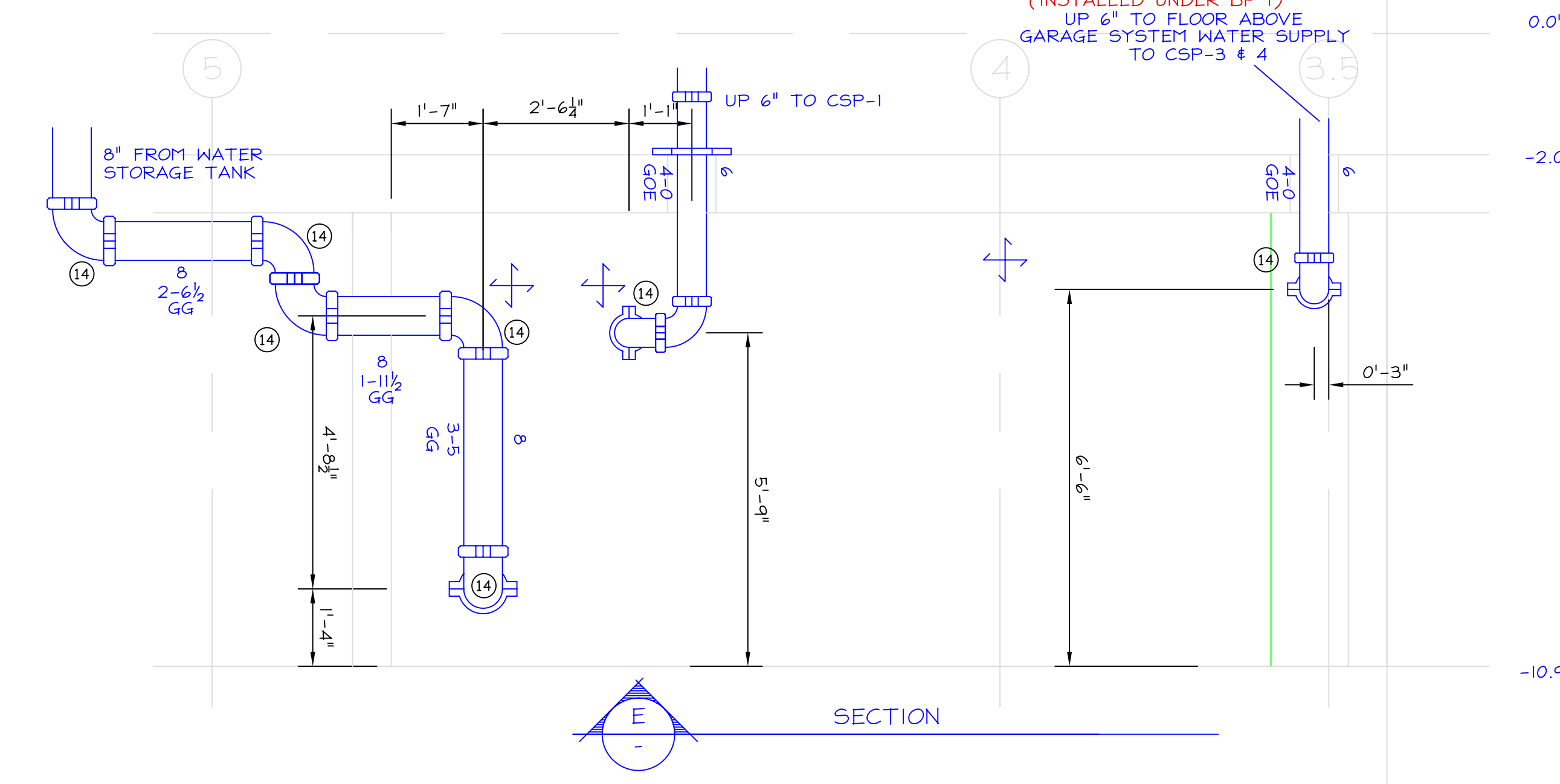
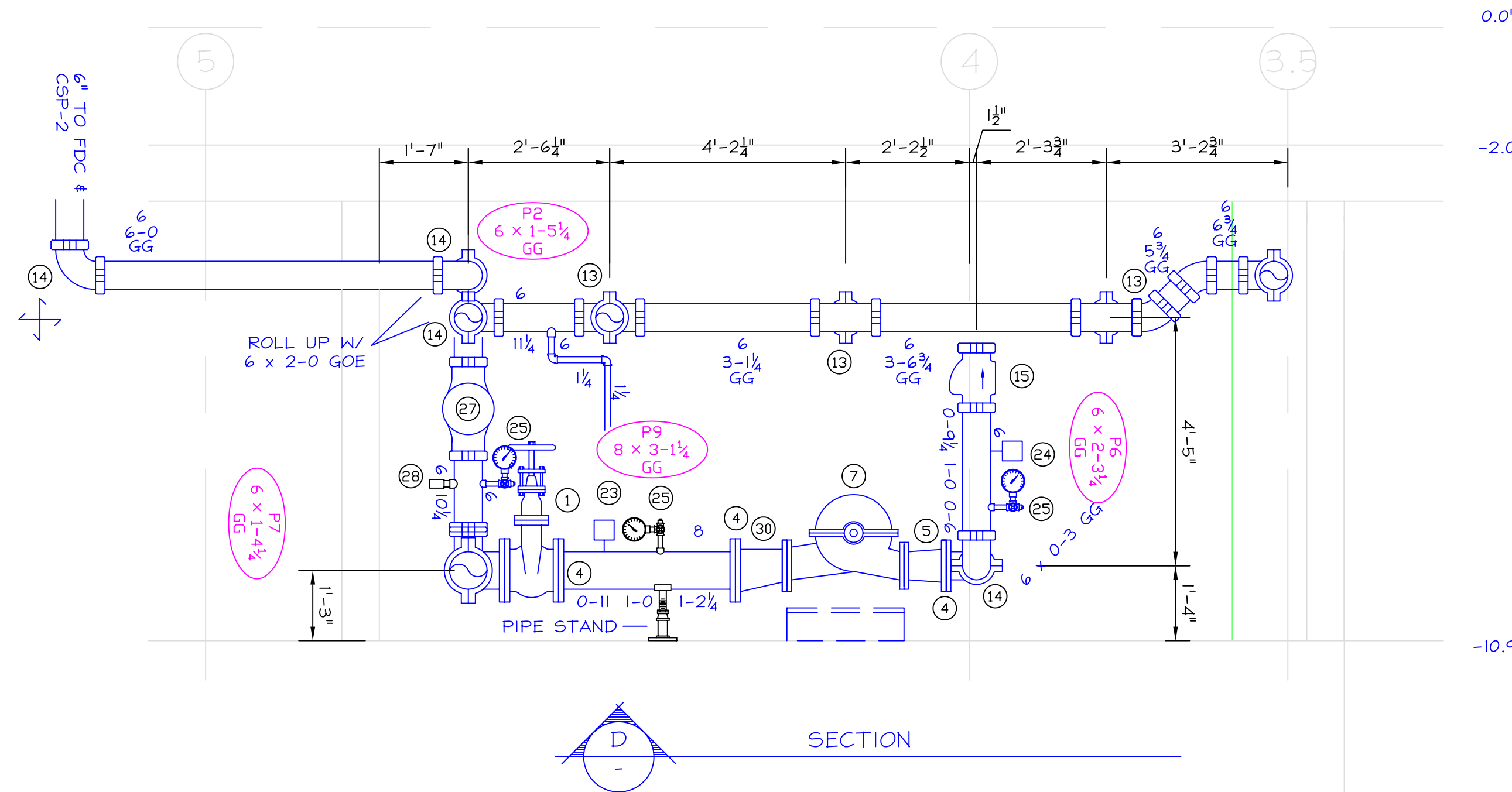
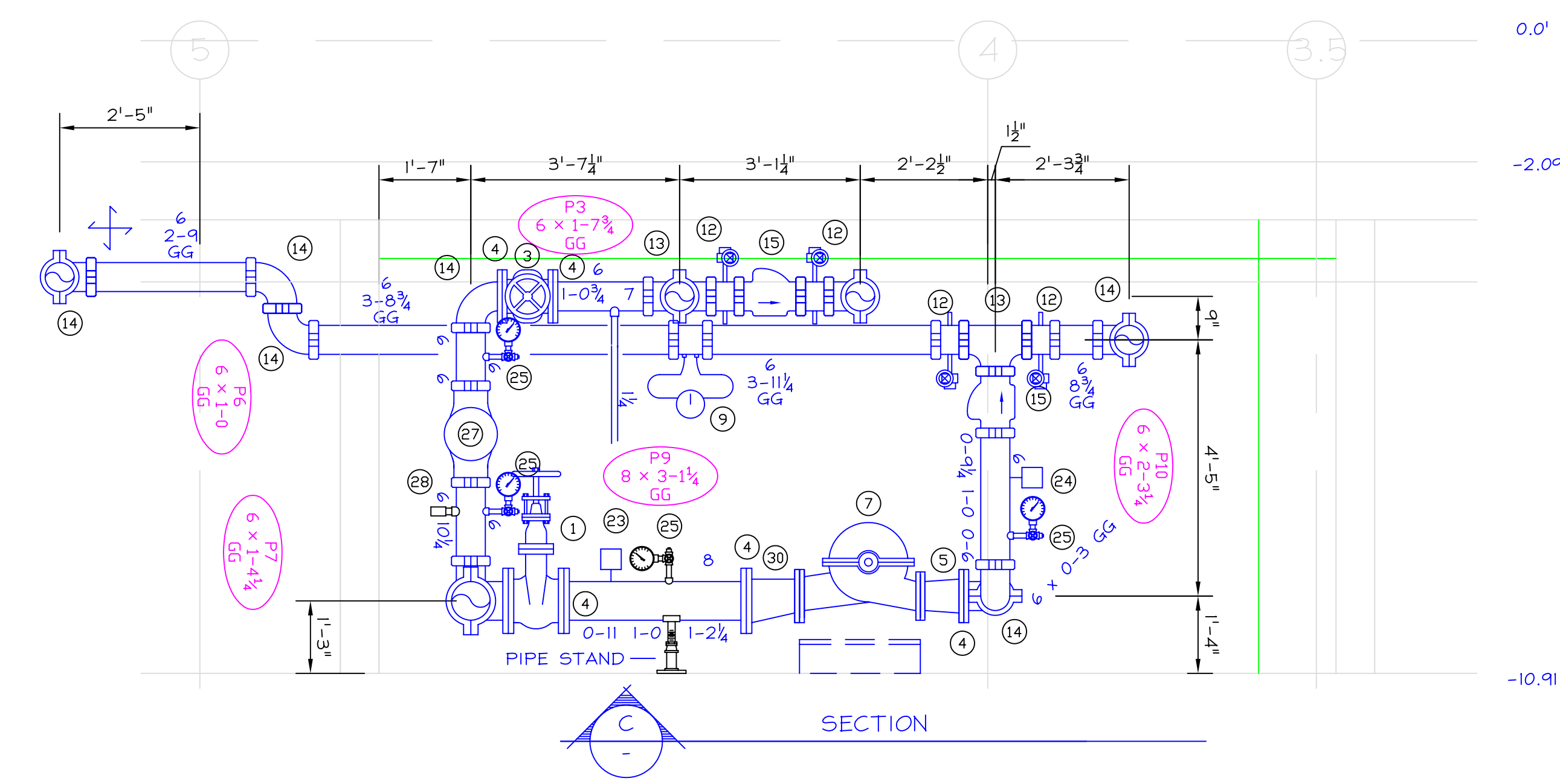
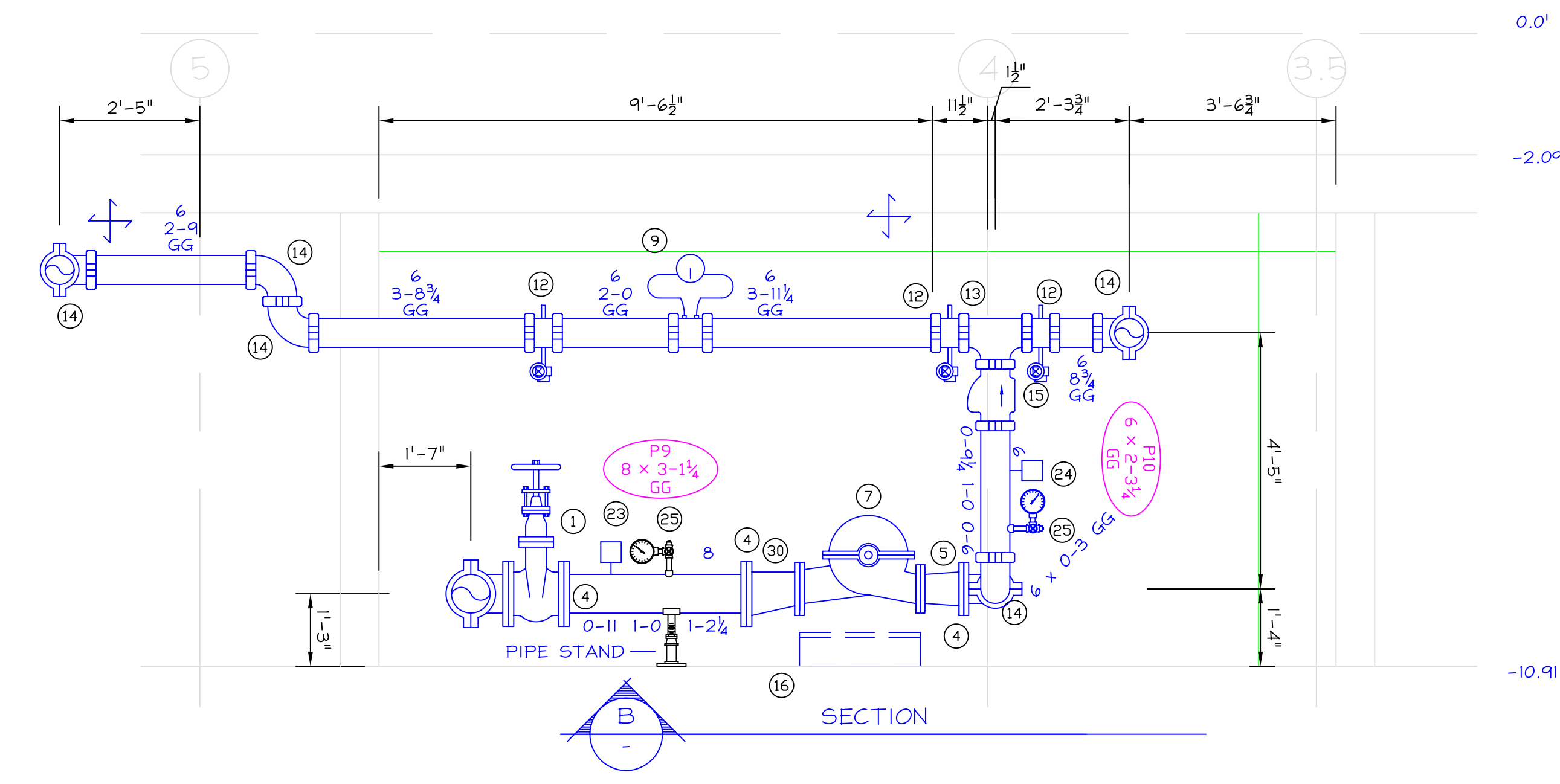
ALL FITTINGS ON THE DISCHARGE SIDE OF THE PUMP TO BE RATED AT 300 PSI

PUMP ROOM EQUIPMENT LIST

- 1 8" DS&Y VALVE W/ TAMPER SW.
- 2 8" GRV'D CHECK VA. W/ GRV'D FLANGE
- 3 6" DS & Y VALVE W/ TAMPER SW.
- 4 GROOVED FLANGE
- 5 6 x 5 CONCENTRIC REDUCER
- 6 ELECTRIC MOTOR US MOTORS MODEL FF125E1CS (125 HP)
- 7 1000 GPM @ 150 PSI FIRE PUMP (CHURN PRESSURE 170 PSI) PEERLESS MODEL 5AEF1IG
- 8 6" GRV'D 90° W/ GRV'D FLANGE
- 9 6" GRV'D FLOW METER
- 10 UL LISTED FIRE PUMP CONTROLLER W/ TRANSFER SWITCH FIREROL FTA1800 W/ FTA900 TRANSFER SWITCH
- 11 JOCKEY PUMP GRUNDFOS CR1-19 W/ 2 HP MOTOR
- 12 6" GRV'D BUTTERFLY VA. W/ TAMPER SW.
- 13 6" GRV'D TEE
- 14 GRV'D 90°
- 15 6" GRV'D CHECK VA.
- 16 CONCRETE PAD W/ GROUT BASE
- 17 1 1/2" GATE VALVE
- 18 1 1/2" CHECK VALVE
- 19 1 1/2" x 1 1/2" x 1/2" TEE
- 20 8" GRV'D 90°
- 21 8" GRV'D 90° W/ GRV'D FLANGE
- 22 JOCKEY PUMP CONTROLLER
- 23 1/2" AIR RELEASE VALVE
- 24 3/2" CASING RELIEF VALVE
- 25 PRESSURE GAUGE W/ 3 WAY VALVE
- 26 SENSING LINE
- 27 PRESSURE REDUCING VALVE (CLA-VAL MODEL 90G-21) INLET 610 PSI - OUTLET 250 PSI (STATIC)
- 28 PRESSURE RELIEF VALVE (PIPE TO DRAIN)
- 29 PRESSURE REDUCING VALVE (CLA-VAL MODEL 90G-21) INLET 210.2 PSI - OUTLET 170.2 PSI (STATIC)
- 30 8 x 6 ECCENTRIC REDUCER

REVISIONS	BY
△	
△	
△	
△	

ENGINEERED FIRE SYSTEMS, INC.
 AUTOMATIC SPRINKLER "SPECIALISTS"
 13457 COLEMAN HWY. GRASS VALLEY, CA 95945, (530) 274-9400



FIRE PUMP

DRAWN
 H. MORGADO
 DATE
 05-03-05
 SCALE
 1/2" = 1'-0"
 FILE NUMBER
 10112
 SHEET
 FP2.01
 1 OF 2 SHEETS